

Obsessed  
with details

**FORMANI®**

**The details  
are not  
the details.  
They make  
the design.**

Charles Eames



'Obsessed with details' is characteristic of everything we do at FORMANI. After all, the difference lies in the details. That is why we constantly challenge ourselves to push the boundaries: from product to process, from strategy to service. In short, at FORMANI: 'good is the enemy of great!'

Our designs must also meet high standards. National and international top designers, who take architectural hardware to a higher level, choose to work with us with good reason. We do not limit our collaborations to one design movement or style. We have shared and decisive core values. These include a passion for design, an eye for detail, and high standards of quality and craftsmanship.

FORMANI's wide range of collections clearly demonstrate our willingness to go the extra mile. We never design just one beautiful door handle out of context. Instead, we always offer our customers a complete concept. This allows the chosen signature look or finish to be used as a common thread throughout the interior, and links door, window, and furniture fittings on a conceptual level.

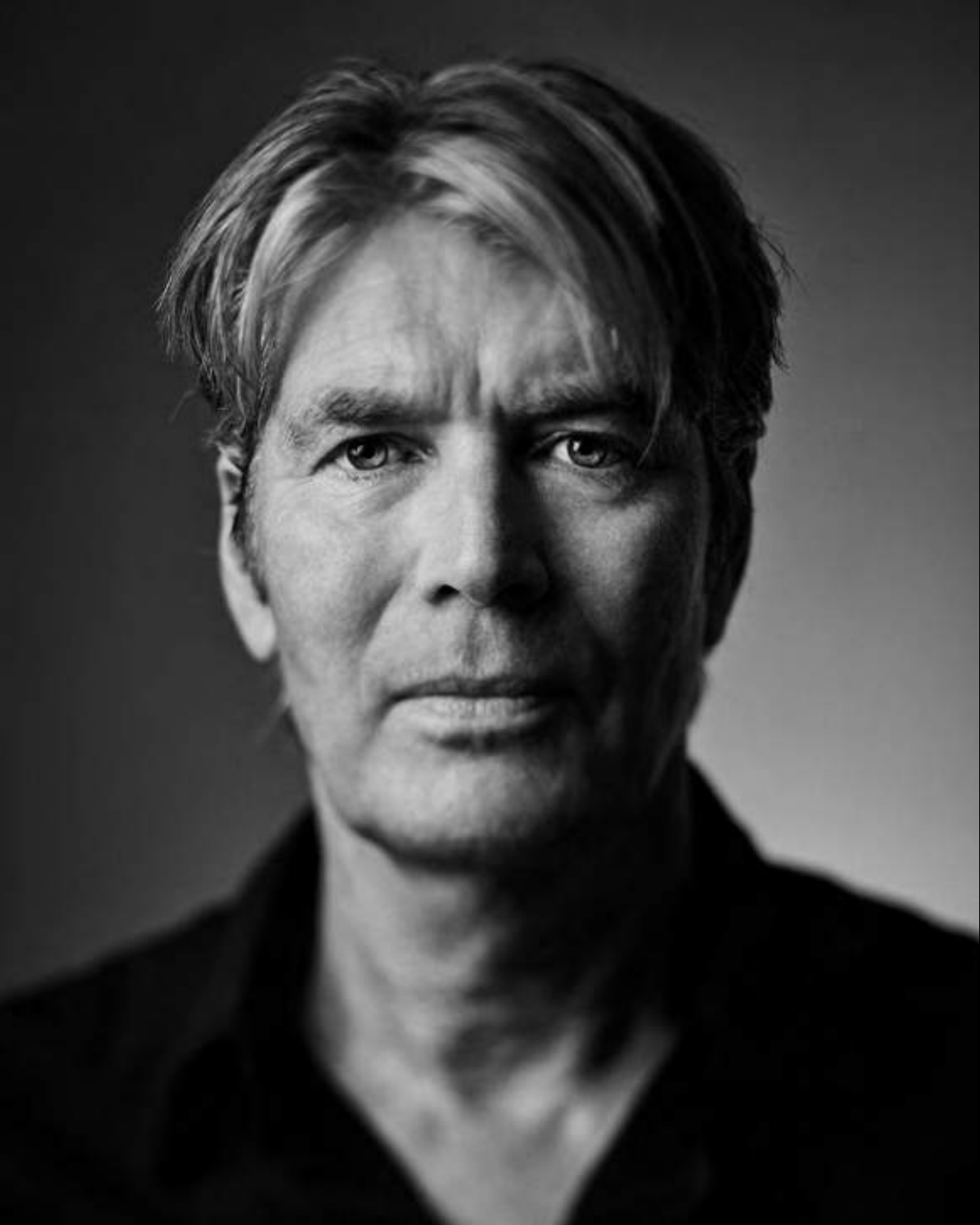
This brochure will give you an impression of our 17 collections and designs. For more information on the complete concepts of every collection, check our online catalogue at [formani.com](http://formani.com) or the full 'Obsessed with details' catalogue. If you have any questions, please feel free to contact us. Our FORMANI team is here to help you with a smile, a healthy dose of self-knowledge, and a dash of humour.

Pim Aarts  
Owner and Managing Director

## Our 17 collections

ONE	by Piet Boon	7
TWO	by Piet Boon	18
INC	by Piet Boon	22
ARC	by Piet Boon	28
ECLIPSE	by David Rockwell	33
TENSE	by Bertram Beerbaum	43
CONE	by Osiris Hertman	51
BOBBY	by Eric Kuster	59
NOUR	by Edward van Vliet	65

BOSCO	by Lázaro Rosa-Violán	71
SQUARE	by Jan des Bouvrie	77
RIBBON	by Bob Manders	83
FOLD	by Tord Boontje	89
EDGY	by Mathieu Bruls	95
FERROVIA	by FORMANI	101
TIMELESS	by FORMANI	106
BASICS	by FORMANI	110
Available finishes		116



## Piet Boon

“At Studio Piet Boon we believe that there is great beauty in simplicity. The simplest details leave a lasting impression. Therefore never underestimate the importance of door fittings.”

### **Oostzaan, the Netherlands**

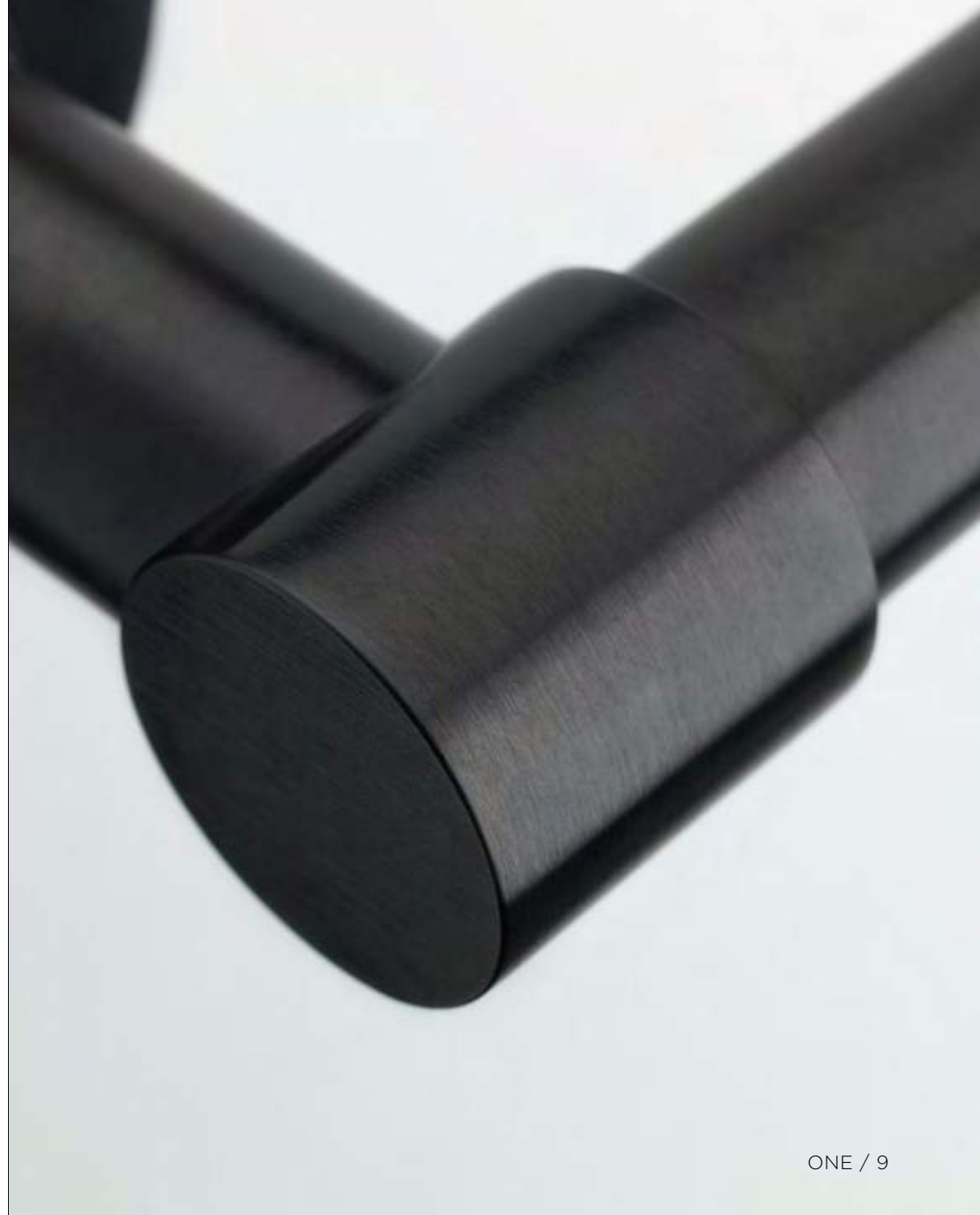
Design philosophy: “Balancing functionality, aesthetics and individuality.”

Designed for FORMANI: ONE, TWO, INC, ARC

Design awards: German Design Award 2020 (ARC), Red Dot Design Award 2019 (INC)

Photography: Reinier van der Aart

**ONE** by Piet Boon



ONE PBL20XL/50  
satin black



ONE PBL20XL/50  
bronze



ONE PBL20XL/50  
PVD satin black



ONE PBL20XL/50  
PVD satin gold





ONE PBL20XL/50  
white



ONE PBL20XL/50  
satin stainless steel



## Restaurant Noma 2.0

**ONE reference:** Copenhagen, Denmark  
“We open the doors of the world’s best restaurant”

Interior design: Studio David Thulstrup  
Architecture: BIG-Bjarke Ingels Group  
Photography: Rasmus Hjortshøj  
Product: ONE PBL20XL/50 satin black



## Restaurant The Jane

**ONE reference:** Antwerp, Belgium  
“Fine dining meets rock ‘n roll black”

Interior design: Studio Piet Boon  
Photography: Eric Kleinberg (left),  
Tijmen Ballieux (right)  
Product: ONE PBT20/50 satin black

# TWO by Piet Boon



TWO PBL23/50  
satin stainless steel (right)

TWO PBL22/50  
satin stainless steel/oak wood (left)



TWO PBL22/50  
satin stainless steel/oak wood black



**INC** by Piet Boon



reddot award 2019  
winner



INC PBI102  
PVD satin black







## Restaurant Brut172

**INC reference:** Reijmerstok, the Netherlands  
“An eye-catching contrast to the raw materials of the interior”

Interior design: Niels Maier  
Photography: Thomas De Bruyne (left),  
Kyonne Leyser (right)  
Product: INC PBI102 PVD satin black

ARC by Piet Boon



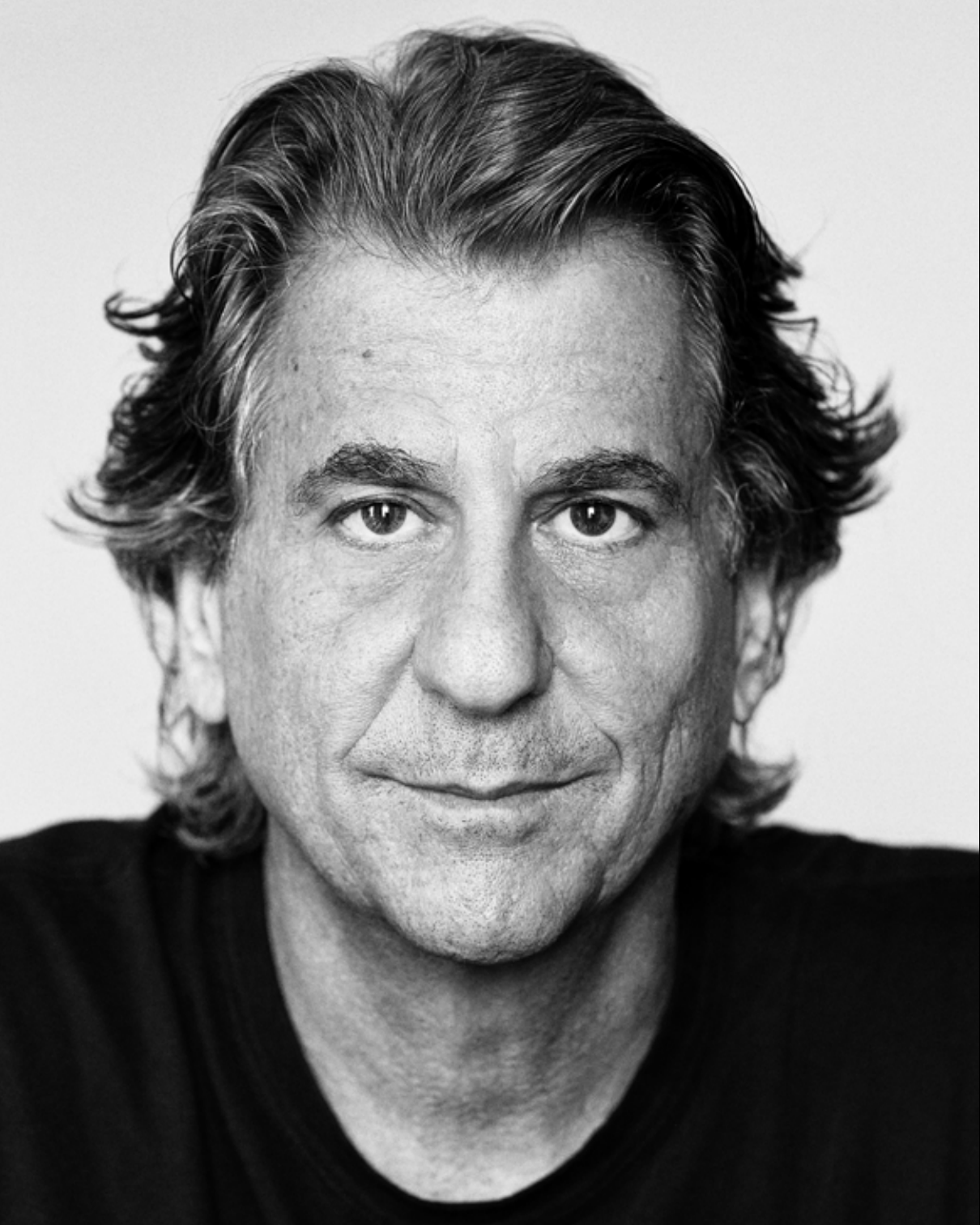
GERMAN  
DESIGN  
AWARD  
WINNER  
2020



ARC PBA101  
satin stainless steel (right)  
PVD satin black (left)







## David Rockwell

“We wanted to create something timeless — a modern classic — with an inflection point that responds to the human touch, like a prop on a stage. The door handle signifies transition and journey.”

**New York, USA**

Design philosophy: “It’s about observing a situation – a process, object or place – and believing it can be better.”

Designed for FORMANI: ECLIPSE

Design award: Red Dot Design Award 2021

Photography: Kamila Harris

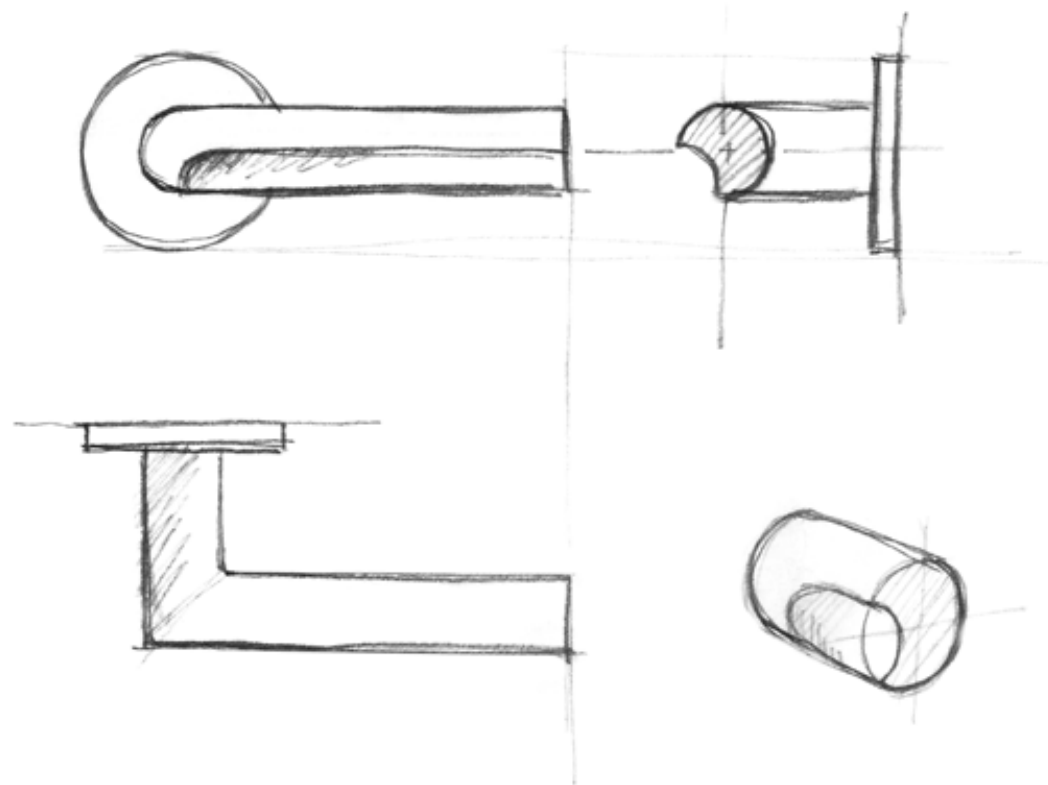
# ECLIPSE

by David Rockwell



ECLIPSE DR100  
PVD satin black





David Rockwell

ECLIPSE DR100  
PVD satin gold



ECLIPSE DR102  
bronze



ECLIPSE DR101  
satin stainless steel



ECLIPSE DR103  
PVD satin black

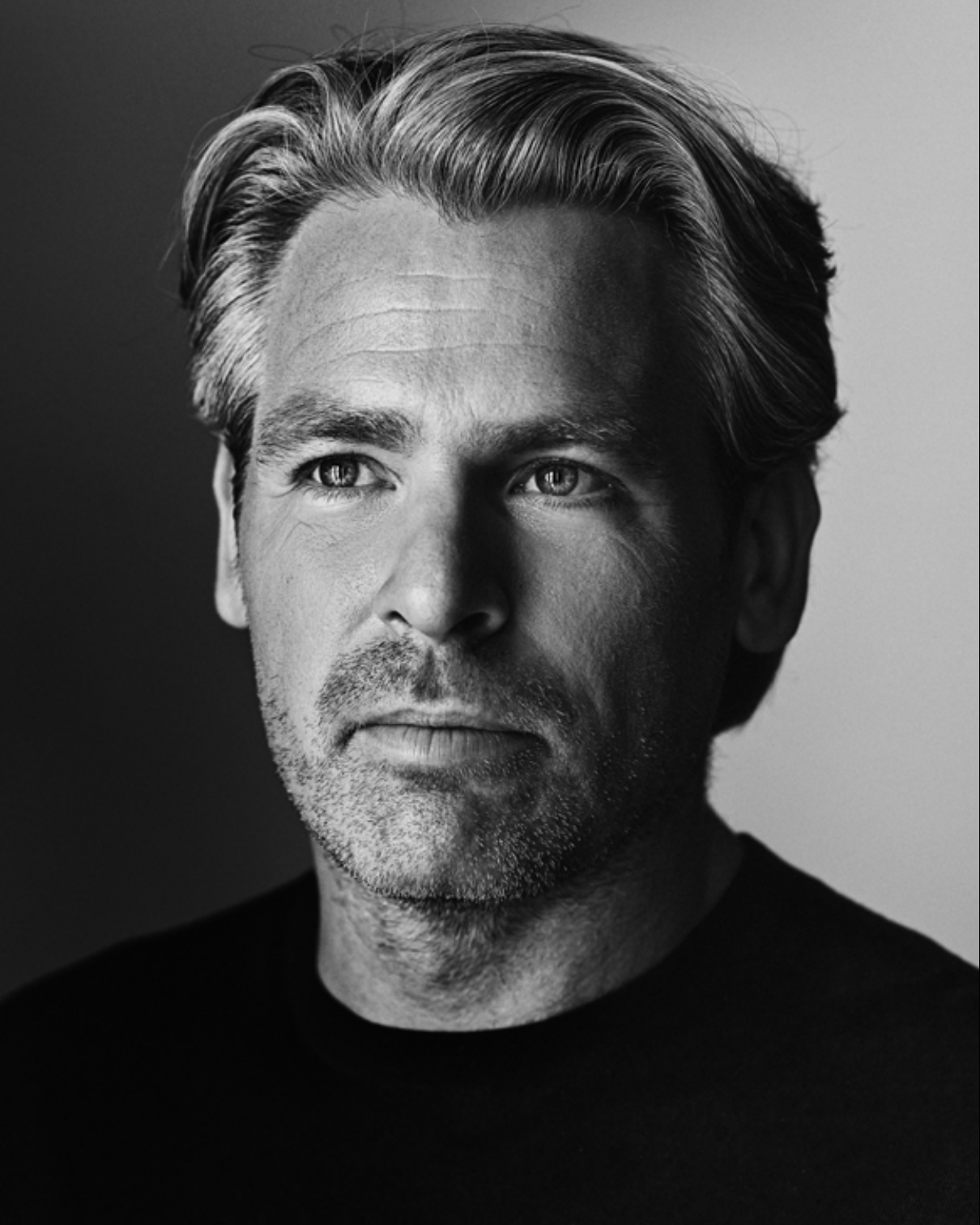




## Fairmont Hotel

**ECLIPSE reference:** Moscow, Russia  
“Born to be exceptional”

Interior design: David Rockwell, Rockwell Group  
Photography: Olga Parshina  
Product: ECLIPSE DR100 PVD satin black



## Bertram Beerbaum

“Door handles may seem like an inconspicuous part in the home, but the devil is in the detail.”

### Laren, the Netherlands

Design Philosophy: “I prefer to design a product that combines design and convenience in a natural way. Any product that I design must be something tough, chic and timeless with a tad own wisdom in them. Functional products with a surprising twist.”

Designed for FORMANI: TENSE

Design award: German Design Award 2016

Photography: Ewoud Rooks

TENSE by Bertram Beerbaum



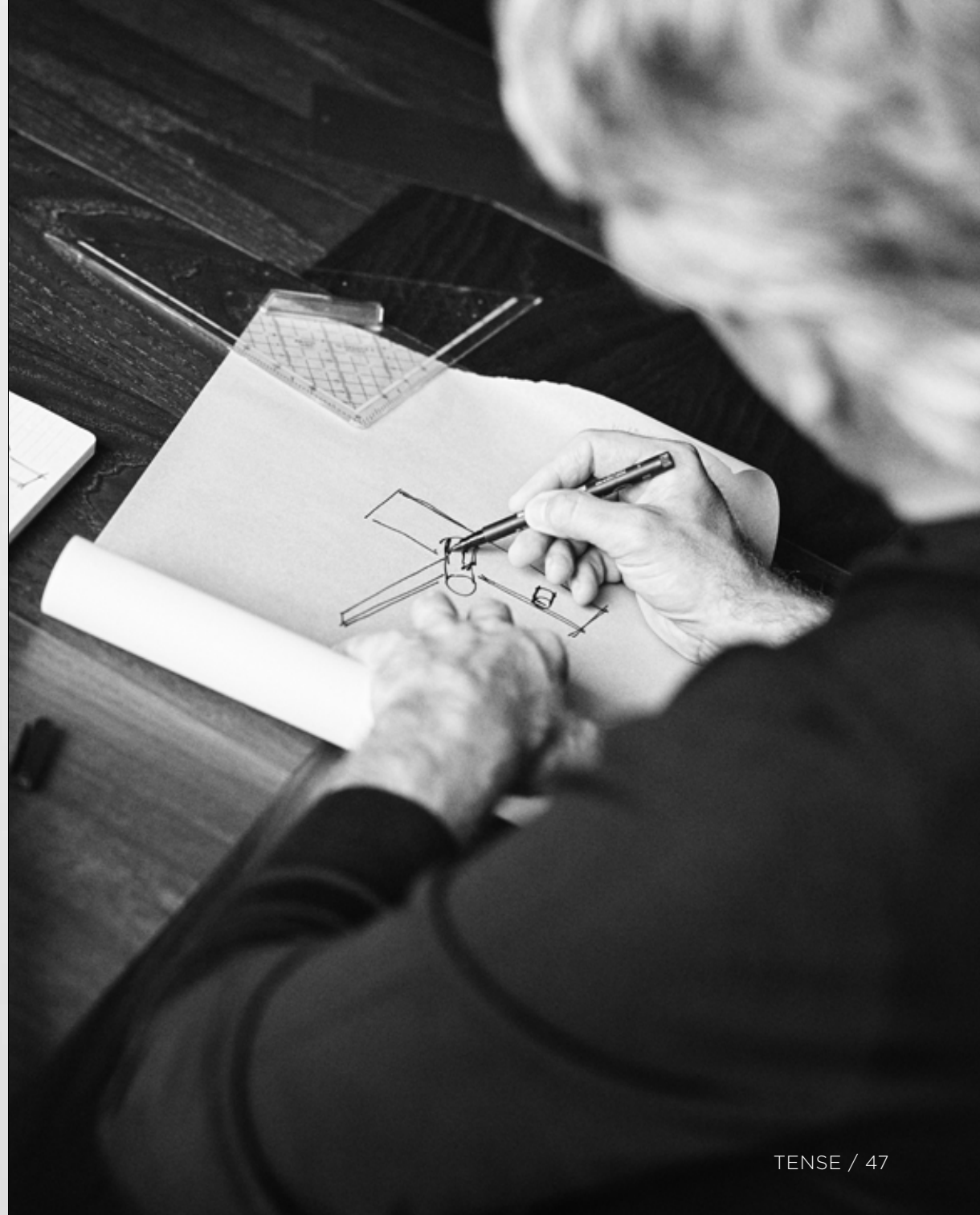
GERMAN  
DESIGN  
AWARD  
SPECIAL  
2016



TENSE BB100  
satin black



TENSE BB100  
bronze





TENSE / 48

TENSE BB100  
satin stainless steel



TENSE / 49



## Osiris Hertman

“A door handle is the crowning jewel of your home – it’s always there, always visible. We’ve chosen a clear, sturdy design with a conical shape and removed the rosette by concealing the technology in the cone section.”

### **Santpoort-Zuid, the Netherlands**

Design philosophy: “I like to incorporate landscapes into my interiors, guided by the essential influence of nature. I believe nature can teach us everything we need to know about design: the warmth of clothing, the softness concealed within hard materials, even flexibility and cohesion. Because that’s what really counts when it comes to interiors: that every last detail is in harmony with the rest.”

Designed for FORMANI: CONE

Design award: Red Dot Design Award 2021

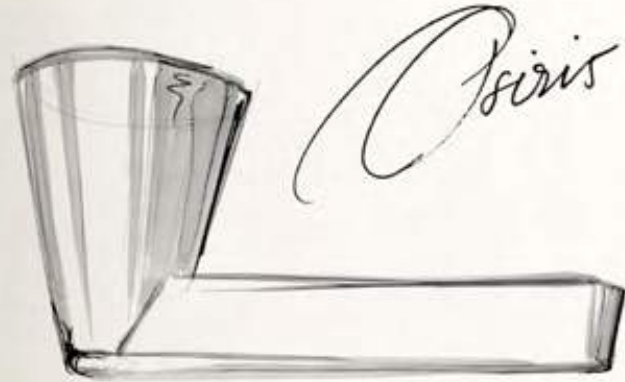
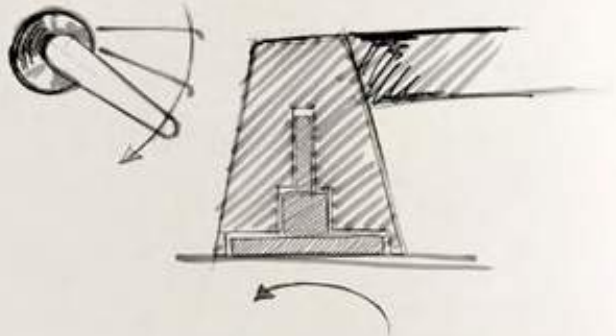
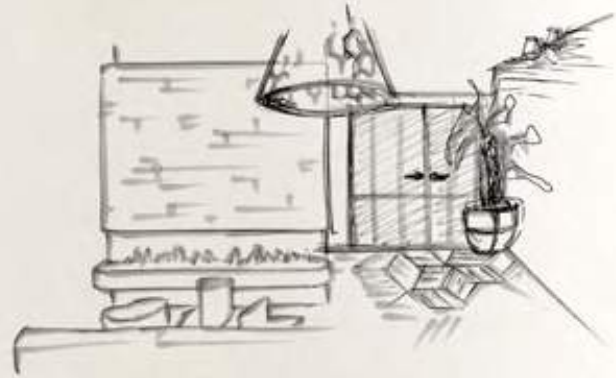
Photography: Carli Hermès

# CONE by Osiris Hertman



CONE OH100  
PVD satin black







CONE OH100  
satin stainless steel



## Eric Kuster

“Real materials, such as the solid steel of a handcrafted door handle, embody the attention to detail that truly makes a difference.”

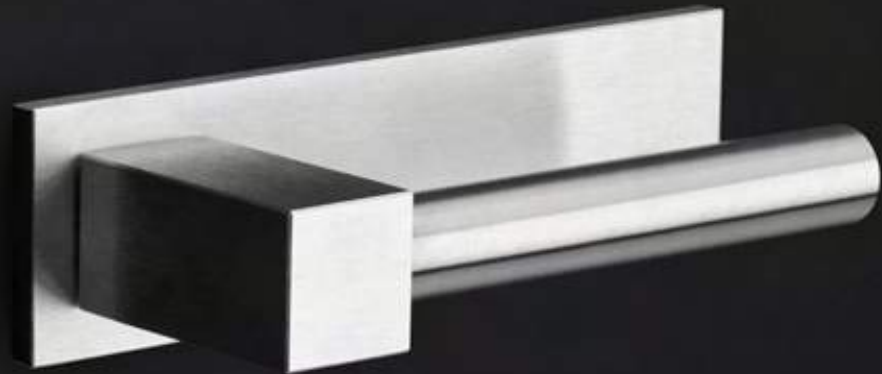
### **Huizen, the Netherlands**

Design philosophy: “Above all else, the chance to exceed expectations in everything I do.”

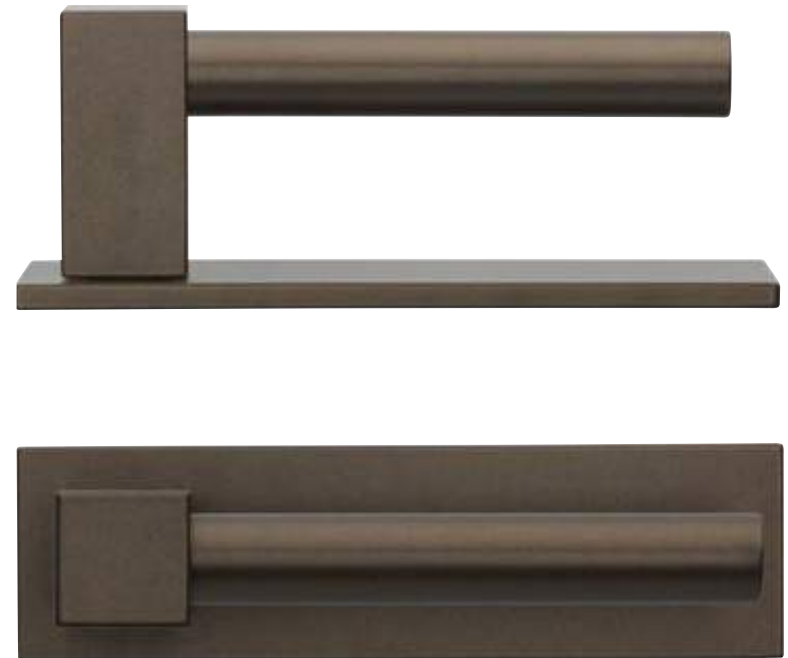
Designed for FORMANI: BOBBY

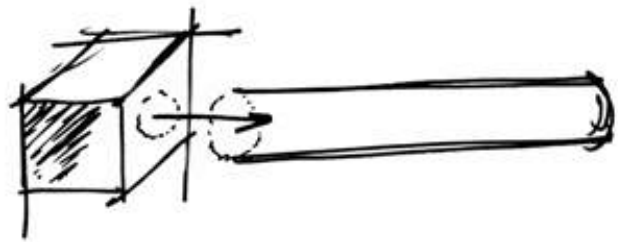
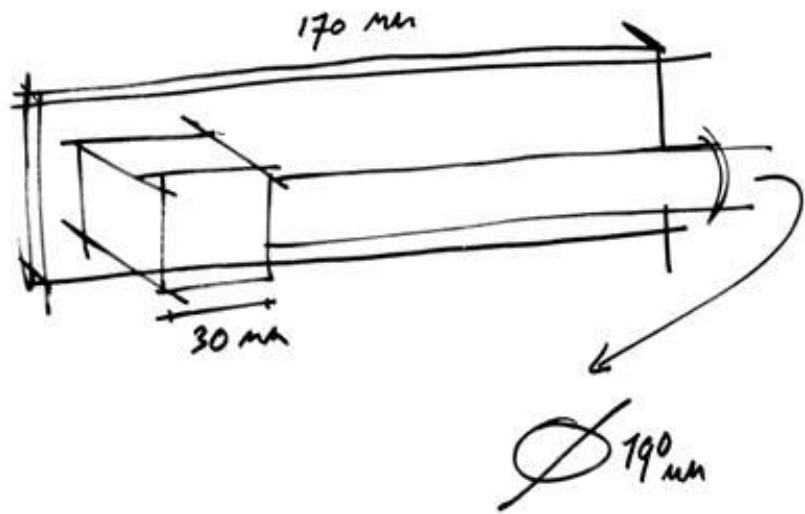
Photography: Andreas Terlaak

**BOBBY** by Eric Kuster

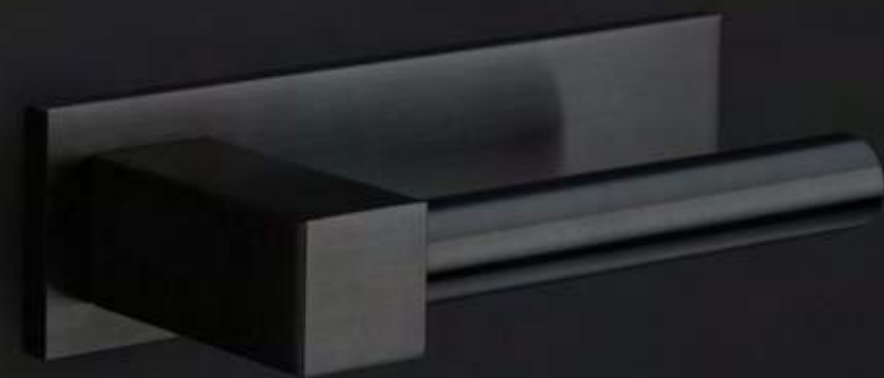


BOBBY EK100  
bronze (right)  
satin stainless steel (left)





*Eric Koster*





## Edward van Vliet

“Layers creating depth and dimension are key at Studio Edward van Vliet. Our door fittings are the hidden gems of these architectural layers. Treasures that enrich and personalize each space.”

**Barcelona, Spain / Amsterdam, the Netherlands**

Design philosophy: “Fascinated by a never depleting source of cultural and natural varieties I aim to compose new worlds by making unique combinations of colours, materials, patterns and shapes.”

Designed for FORMANI: NOUR

Design award: German Design Award 2015

Photography: Frank Tielemans

**NOUR** by Edward van Vliet



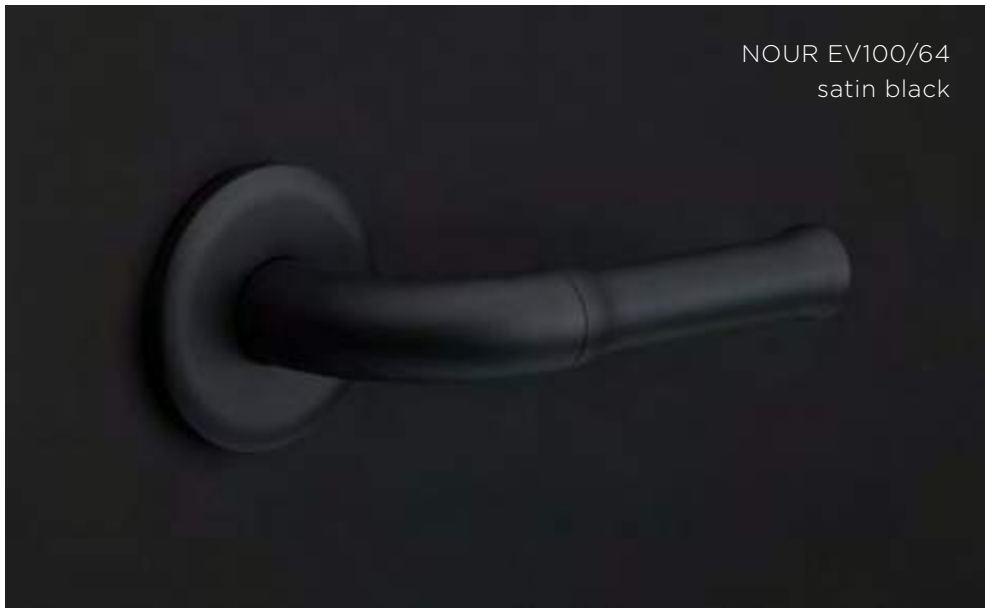
NOUR / 66

NOUR EV100/64  
PVD satin gold



NOUR / 67

NOUR EV100/64  
satin black



NOUR EV100/64  
polished stainless steel





## Lázaro Rosa-Violán

“A door handle is what separates you and a room. Door handles open worlds. A handle is a medium, a first impression. It allows you to enter and leave.”

### **Barcelona, Spain**

Design philosophy: “My philosophy has always been based on accessible design. The experience should be greater than the space and for everyone to participate in.”

Designed for FORMANI: BOSCO

Design awards: German Design Award 2017,  
Iconic Award 2017

Photography: Daniel Alea

**BOSCO** by Lázaro Rosa-Violán



BOSCO / 72

BOSCO LZ100  
satin stainless steel/satin black

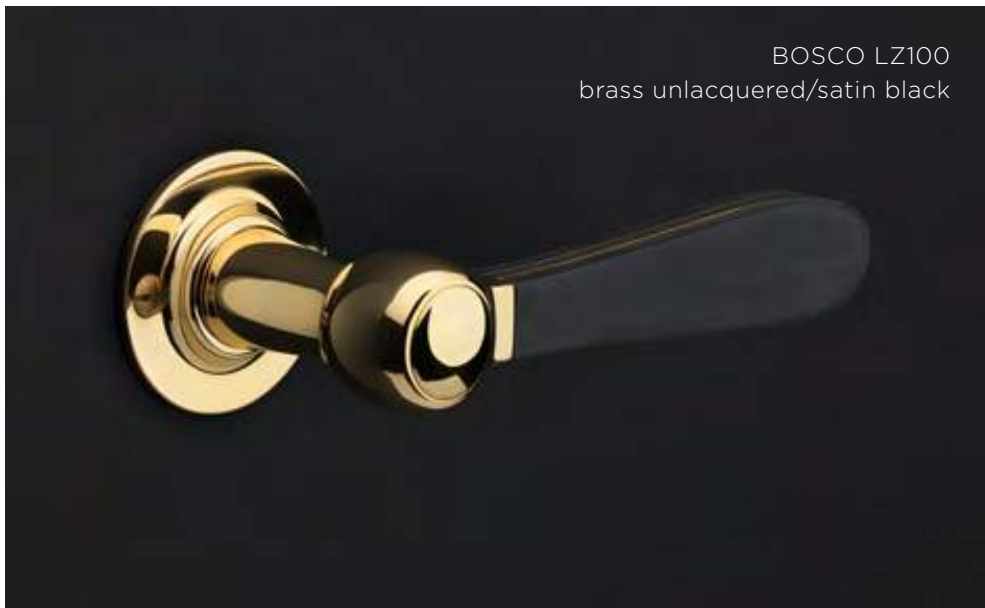


BOSCO / 73

BOSCO LZ100MA  
polished stainless steel/carrara marble



BOSCO LZ100  
brass unlacquered/satin black





## Jan des Bouvrie

“Open the door in style. We joined forces with FORMANI to create a doorware series that focuses on the essentials, creating a simple, sleek, and timeless design.”

**Naarden, the Netherlands († October 4, 2020)**

Design philosophy: “Symmetry, minimalism and functionality.”

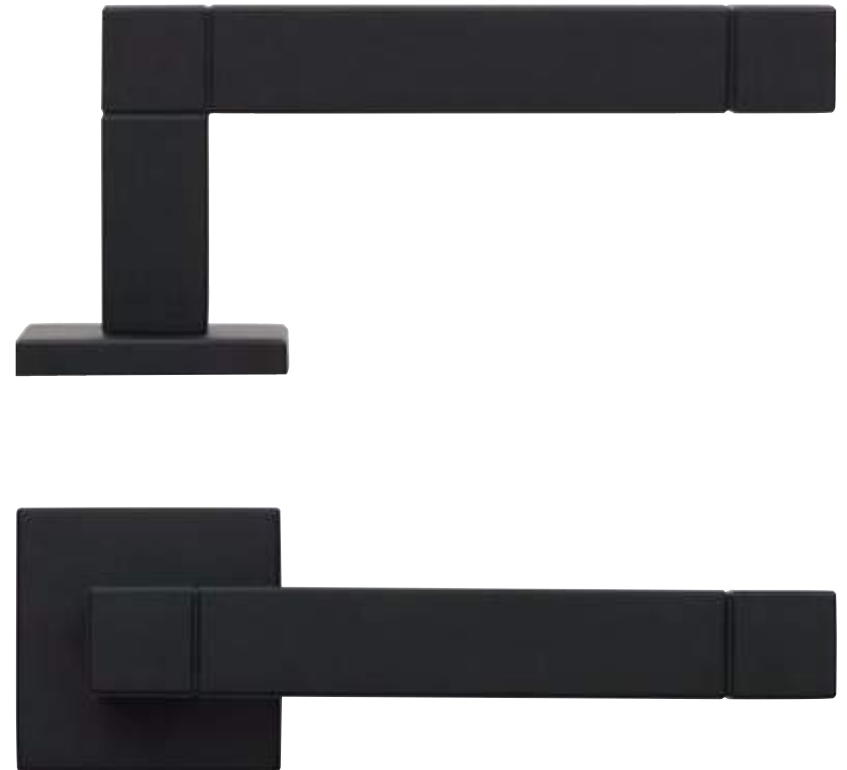
Designed for FORMANI: SQUARE

Photography: Erwin Olaf

# SQUARE by Jan des Bouvrie



SQUARE JB100  
satin black (right)  
white (left)



SQUARE JB100  
satin stainless steel



SQUARE JB100  
polished stainless steel





## Bob Manders

“Create unpredictable yet harmonious spaces that are at home anywhere in the world.”

### **Oisterwijk, the Netherlands**

Design philosophy: “Combine a sensitive understanding of the past with a passion for innovation.”

Designed for FORMANI: RIBBON

Design award: Iconic Awards 2015

Photography: Marjo van de Peppel-Kool

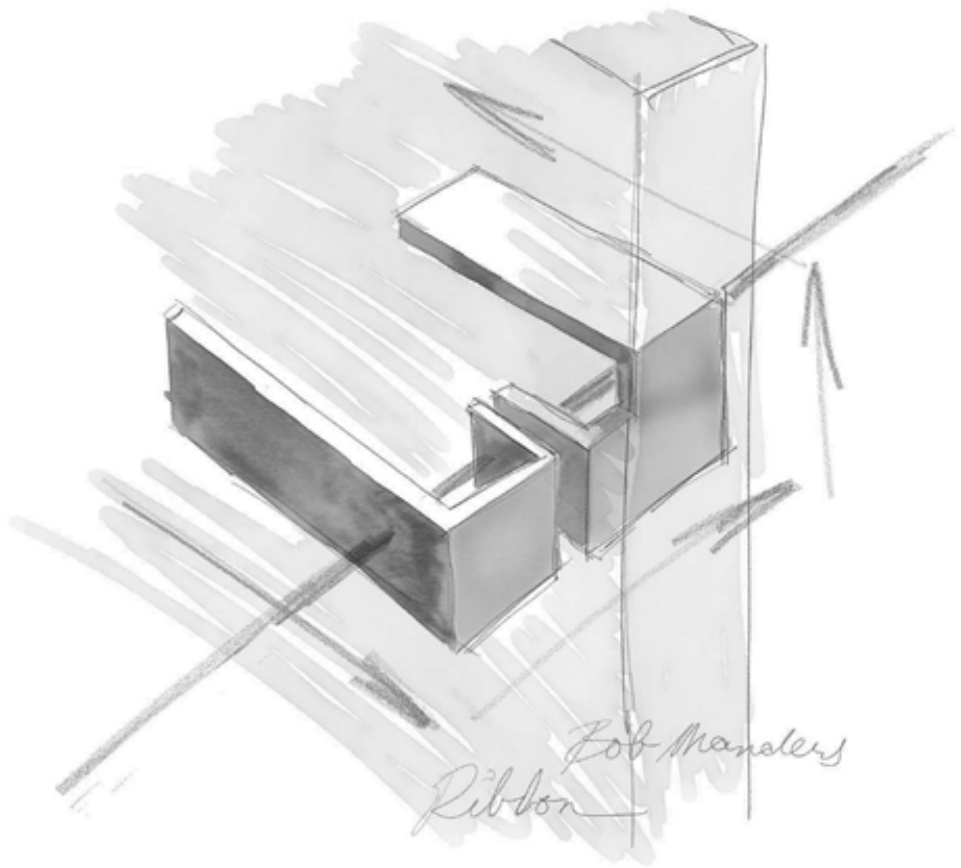
# RIBBON by Bob Manders

IC 0 2  
NIC 0  
AWA 1  
RDS 5  
product  
winner



RIBBON BM100  
satin black (right)  
satin stainless steel (left)







## Tord Boontje

“I’m interested in creating elements for everyday life that are exciting and uplifting to live with. Explore and use accessories to re-invent your space.”

**London, United Kingdom**

Design philosophy: “A design is not just a design, it should tell a story.”

Designed for FORMANI: FOLD

Design award: Red Dot Design Award

Photography: Angela Moore

# FOLD

by Tord Boontje



FOLD TB100  
satin stainless steel







## Mathieu Bruls

“In appearance EDGY shows what it does; while handling, she feels like another body.”

**Maastricht, the Netherlands**

Design philosophy: “Go with the flow, knowing when to go against it.”

Designed for FORMANI: EDGY

Photography: Hugo Thomassen

**EDGY** by Mathieu Bruls



EDGY / 96

EDGY EGR50  
satin black



EDGY / 97

EDGY EGR50  
satin stainless steel





## BY FORMANI

“The importance of authenticity was the leading idea in these following three collections, which are based on traditional models that have stood the test of time.”

### **Maastricht, the Netherlands**

Pim Aarts, Owner and Managing Director

Design philosophy: “We must do more than create products that are functional and understandable. We need to develop products that also bring excitement, pleasure and fun, and - perhaps most importantly - beauty to people’s lives. FORMANI simply wants to make life a bit more beautiful.”

Developed by FORMANI: FERROVIA, TIMELESS, BASICS

Photography: Tijmen Ballieux

**FERROVIA** by FORMANI



FERROVIA FVL100/48  
satin stainless steel



FERROVIA / 103

FERROVIA FVL100/48  
polished stainless steel



FERROVIA FVL100/48  
satin stainless steel



# TIMELESS by FORMANI



TIMELESS 1934GRR50  
satin nickel/ebony wood (right)  
brass unlacquered/ebony wood (left)





## Project August

**TIMELESS reference:** Antwerp, Belgium  
“Deep respect for its heritage”

Interior design: Vincent Van Duysen

Photography: Tijmen Ballieux

Product: TIMELESS 1925GRR50 satin black

**BASICS** by FORMANI



BASICS / 110

BASICS LB2-19  
PVD satin gold



BASICS / 111

BASICS LB2-19  
white



BASICS LB2-19  
satin stainless steel



BASICS LB2-19  
satin black



BASICS LB2-19  
polished stainless steel



BASICS LB2-19  
PVD polished copper



BASICS LB2-19  
PVD satin gold



BASICS LB2-19  
PVD satin bronze



BASICS LB2-19  
PVD gunmetal

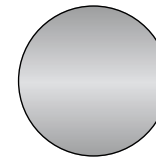


# Finishes

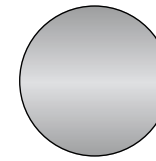
Our products are available in a variety of finishes. Our extensive finish chart ensures that our hardware collections fit into any interior or exterior design in terms of style and quality. Please note that the available finishes and colour sets may vary according to the product, collection, and model.



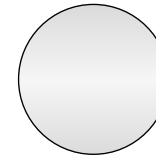
More information:  
see our website



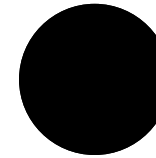
1  
**Satin stainless steel**  
Available in: ONE, TWO, INC, ARC, ECLIPSE, TENSE, CONE, BOBBY, BOSCO, SQUARE, RIBBON, FOLD, EDGY, FERROVIA, BASICS



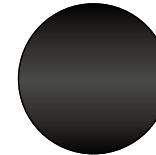
2  
**PVD satin stainless steel**  
Available in: SQUARE, BASICS



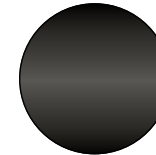
3  
**Polished stainless steel**  
Available in: NOUR, BOSCO, SQUARE, FERROVIA, BASICS



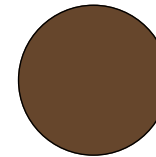
4  
**Satin black**  
Available in: ONE, TENSE, NOUR, SQUARE, RIBBON, EDGY, TIMELESS, BASICS



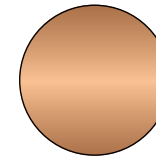
5  
**PVD satin black**  
Available in: ONE, INC, ARC, ECLIPSE, CONE, BOBBY



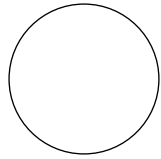
6  
**PVD gunmetal**  
Available in: BASICS



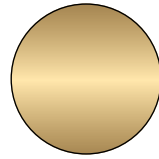
7  
**Bronze**  
Available in: ONE, ECLIPSE, TENSE, BOBBY, BASICS



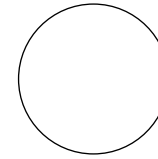
8  
**PVD satin bronze**  
Available in: BASICS



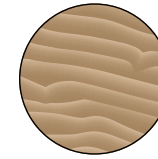
9  
**White**  
Available in: ONE,  
SQUARE, BASICS



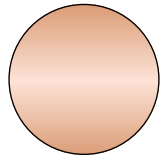
10  
**PVD satin gold**  
Available in: ONE,  
ECLIPSE, NOUR, BASICS



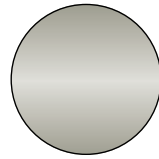
20  
**Corian**  
Available in:  
ONE BATHWARE



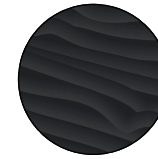
21  
**Oak wood**  
Available in: TWO



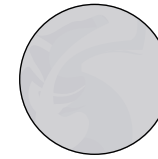
11  
**PVD polished copper**  
Available in: BASICS



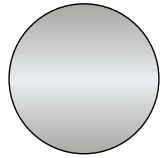
12  
**Satin nickel**  
Available in: TIMELESS



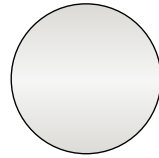
22  
**Oak wood black**  
Available in: TWO



23  
**Carrara marble**  
Available in: BOSCO



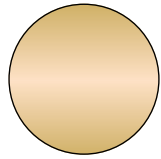
13  
**PVD satin nickel**  
Available in: TIMELESS



14  
**Bright nickel**  
Available in: TIMELESS



24  
**Ebony wood**  
Available in: TIMELESS



15  
**Brass unlacquered**  
Available in: BOSCO,  
TIMELESS

# Contact

Formani Holland BV  
Europalaan 12  
6199 AB  
Maastricht-Airport  
The Netherlands

+31 (0)43 308 90 00  
info@formani.com  
www.formani.com



## **Editorial coordination**

Formani Holland BV, Maastricht-Airport (NL)  
Zuiderlicht, Maastricht (NL)

## **Design and art direction**

Zuiderlicht, Maastricht (NL)

## **Main photography:**

Hugo Thomassen, Maastricht (NL)

## **Printing**

Drukkerij Walters, Maastricht (NL)

**Copyright © 2021 Formani Holland BV  
Maastricht, the Netherlands**

All rights reserved. Reproduction of the content  
in other publications is not permitted without  
the prior consent of FORMANI Holland BV.

**The details  
are not  
the details.  
They make  
the design.**